

CANTEK

CFS100

AUTOMATIC DEFECT CUTOFF CHOP SAW



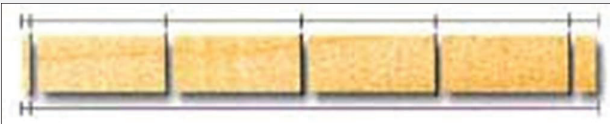
CFS100 | AUTOMATIC DEFECT CUTOFF CHOPSAW

An economical and high-speed approach to defect cross-cutting with partial optimization.

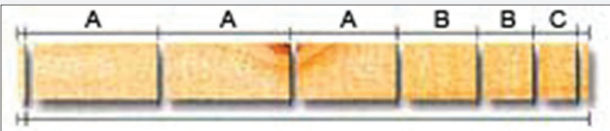
The Cantek CFS100 Automatic Defect Cutoff Chop Saw is the perfect upgrade from your manual cutoff saw with 3 to 5 times higher production output. It is designed to scan for defects in your material which are indicated by a florescent crayon mark. The saw will cut on the crayon mark allowing for fast defect removal. Equipped with several cutting modes like fixed, sequential, defect cutting modes the operator can select the program most suited to their needs. The powerful 10HP motor and 18" blade provide for effortless cutting from 11.8" (w) x 2.75" (t) or 5.9" (w) x 3.9" (t). An optional feature is available for cutting thin material down to 0.078" (2mm) which is ideal for lamellas for engineered flooring. For flooring companies, the CFS100 can be combined in-line with our EM12 End Matcher for a highly efficient defecting & end matching solution.

Cutting Modes.

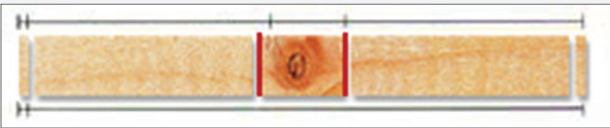
Fixed length cutting mode:



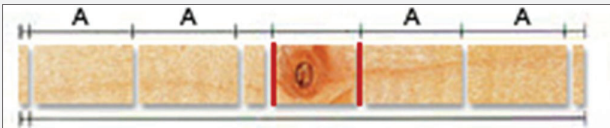
Sequential cutting mode (10 sets of cutting sizes memory):



Marking lines cutting mode with double end trimming:

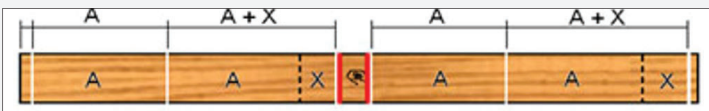


Marking lines (defects) cutting mode with fixed length cutting:



This function can do the following jobs simultaneously:

- Defect
- Cut fixed size (A)
- Cut finger jointing size without lost (A+X)



Combination CFS100 & EM12
Defect and End Matcher Flooring Line

Key Advantages.

- Ideal for the defect cutting wood mouldings, wood flooring, finger joint blocks, wood paneling and more!
- Machine scans for defects marked with a florescent crayon allowing for high-speed defecting
- Provides 3 to 5 times higher production rate than manual cut-off saws.
- 5% increase in material yield over manual cutting operations
- +/- 1mm (0.0393") accuracy
- User friendly touch screen control with on board synoptics, cutting counter, and menu based cutting modes
- Servo driven feed motor for fast accurate motion and position control
- Compact design requires less space than manual cutting setups
- Adjustable automatic trim of front and tail of the workpiece
- Defect blowing system combined with computerized logic control permits the blowing time and the length of defect to be set as desired

Specifications.

| | |
|-------------------------------------|---|
| Saw Motor | 10HP |
| Saw Spindle Speed | 3200 RPM |
| Feed Motor (Servo motor) | 2.7HP (2Kw) |
| Max. feed speed | Variable to 262 ft/min (80 m/min) |
| Max. infeed weight | 44 lbs (20 kgs) |
| Circular Saw Diameter | Ø 18" (455mm) |
| Saw spindle diameter | 30mm |
| Minimum distance between marks | 0.787" (20mm) |
| Air pressure: for machine | 72~85 PSI (5~6 kg/cm2) |
| Air pressure: defect blowing system | 7~9 kg/cm2 (99.5~128 PSI) |
| Dust ports | 2 @ 4" |
| Electrics | 460/3/60 = 14 Full Load amps (Stock Machine) |

Cutting Range.

